

# **Papillion Garden Club Shirt Information**

## **LOGO LOGIX**

Logo Embroidery & Screen Printing - **402-597-6424**

101 Highland Dr., Papillion, NE. 68046 – [www.logologic.net](http://www.logologic.net)

Hours: 9AM – 5PM Monday - Friday

**Lance Beasley**

**Each Member Places Their Own Order.**

You can order any color and shirt style you prefer. You can call or go in person to place your order. See attached Spec. Sheets. Prices for each style is posted on each spec sheet. Sizes Small – X Large are the listed price. Size 2X add \$2.00. Each size up add \$1.00. See chart below: this example is for the Port Authority Polo Silk Touch.

**Shirt sizes are Small – 6X.**

Shirt sizes: Small – X Large are \$17.00 each

2X is \$19.00

3X is \$20.00

4X is \$21.00

5X is \$22.00

6X is \$23.00

**To add your name the cost is \$6.00.**

**You can bring in your own shirt style and have the club logo added price will be given at that time.**

Delivery time depends on availability. Generally it will take 3 to 4 weeks. **If you have any questions Lance will be happy to talk to you.**



LOGO on Shirts.



**Papillion  
Garden  
Club**

Logo on Shirts



**\$17.00**



An enduring favorite, our comfortable classic polo is anything but ordinary. With superior wrinkle and shrink resistance, a silky soft hand and an incredible range of styles, sizes and colors, it's a first-rate choice for uniforming just about any group.

- 5-ounce, 65/35 poly/cotton pique
- Flat knit collar and cuffs
- Metal buttons with dyed-to-match plastic rims
- Double-needle armhole seams and hem
- Side vents

**CARE INSTRUCTIONS**

Machine Wash Cold With Like Colors. Do Not Bleach. Tumble Dry Low. Cool Iron, If Necessary.

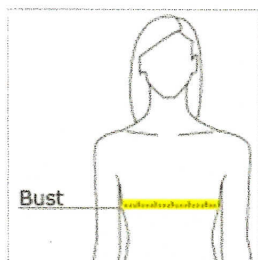


front



back

**HOW TO MEASURE**



**BUST**

Measure under the arm and around the fullest part of the bust with arms down, keeping tape horizontal.

**\$ 17.00**

**SIZE CHART**

	XS	S	M	L	XL	XXL	3XL	4XL	5XL	6XL
Size	2	4/6	8/10	12/14	16/18	20/22	24/26	28/30	32/34	36/38
Bust	32-34	35-36	37-38	39-41	42-44	45-47	48-51	52-55	56-59	60-63

**COLOR INFORMATION**

Banana PMS 1345C	Black PMS NTR BLACK C	Bright Lavender PMS 2635C	Burgundy PMS 7428C	Charcoal Heather Grey	Clover Green PMS 7763C	Coffee Bean PMS 476C	Cool Grey PMS 7539C	Court Green PMS 7724C	Dark Green PMS 5467C	Deep Berry PMS 7650C
Eggplant PMS 7448C	Gold PMS 143C	Hibiscus PMS 2348C	Kelly Green PMS 341C	Light Blue PMS 7451C	Light Pink PMS 196C	Lime PMS 2285C	Maroon PMS 504C	Maui Blue PMS 2200C	Mediterranean Blue PMS 2118C	Mint Green PMS 9543C
Navy PMS 533C	Orange PMS 172C	Purple PMS 7679C	Red PMS 187C	Royal PMS 3597C	Steel Grey PMS 7540C	Stone PMS 452 C	Strong Blue PMS 2133C	Sunflower Yellow PMS 109C	Teal Green PMS 7715C	Texas Orange PMS 7584C
			White							
Tropical Pink PMS 2452C	Turquoise PMS 3015C	Ultramarine Blue PMS 7455C								

Port Authority® Ladies Silk Touch™ Long Sleeve Polo. L500LS

\$24.00



A favorite for years, our Silk Touch™ polo is soft, supple and easy to care for. The silky smooth pique knit resists wrinkles while the classic long sleeve style looks great on everyone.

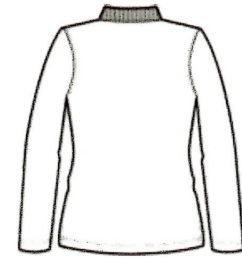
- 5-ounce, 65/35 poly/cotton pique
- Flat knit collar and cuffs
- Double-needle armhole seams and hem
- 3-button reverse placket
- Metal buttons with dyed-to-match plastic rims
- Open hem sleeves
- Side vents

CARE INSTRUCTIONS

Machine Wash Cold With Like Colors. Do Not Bleach. Tumble Dry Low. Cool Iron, If Necessary.

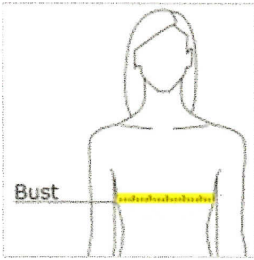


front



back

HOW TO MEASURE



**BUST**  
Measure under the arm and around the fullest part of the bust with arms down, keeping tape horizontal.

\$ 24.00

SIZE CHART

	S	M	XS	XXL	3XL	4XL	L	XL
Size	4/6	8/10	2	20/22	24/26	28/30	12/14	16/18
Bust	35-36	37-38	32-34	45-47	48-51	52-55	39-41	42-44

COLOR INFORMATION



Black  
PMS NTR BLACK  
C



Burgundy  
PMS 7428C



Dark Green  
PMS 5467C



Navy  
PMS 533C



Red  
PMS 187C



Royal  
PMS 3597C

White

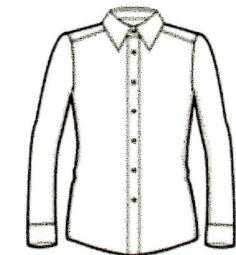


With sturdy construction, a generous cut and soft garment washing, our Value Denim shirt won't stretch your budget.

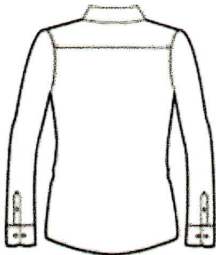
- 6.5-ounce, 100% cotton
- Double-needle stitching throughout
- Traditional, relaxed look
- Open collar
- Horn-tone buttons
- Rounded adjustable cuffs
- Due to special finishing process, colors may vary.

CARE INSTRUCTIONS

Machine wash cold with like colors. Do not bleach. Tumble dry low. Warm iron if necessary.

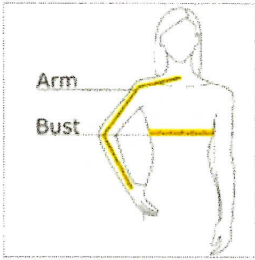


front



back

HOW TO MEASURE



**BUST**  
Measure under the arm and around the fullest part of the bust with arms down, keeping tape horizontal.

**ARM**  
Place hand on hip. Start at the center of the back of the neck and measure across the shoulder, to the elbow, and then down to the wrist.

# 24.00

SIZE CHART

	3XL	4XL	S	M	L	XL	XS	XXL
Size	24/26	28/30	4/6	8/10	12/14	16/18	2	20/22
Bust	48-51	52-55	35-36	37-38	39-41	42-44	32-34	45-47
Arm	33 3/8 - 33 3/4	33 3/4 - 34 1/2	30 3/4 - 31 1/2	31 1/2 - 32	32 - 32 1/2	32 1/2 - 33	30 - 30 3/4	33 - 33 3/8

COLOR INFORMATION



Faded Blue\*



Ink Blue\*



**\$17.00**



An enduring favorite, our comfortable classic polo is anything but ordinary. With superior wrinkle and shrink resistance, a silky soft hand and an incredible range of styles, sizes and colors, it's a first-rate choice for uniforming just about any group.

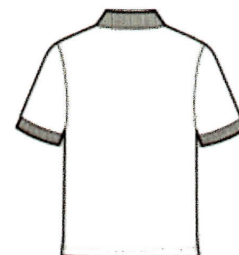
- 5-ounce, 65/35 poly/cotton pique
- Flat knit collar and cuffs
- Metal buttons with dyed-to-match plastic rims
- Double-needle armhole seams and hem
- Side vents

**CARE INSTRUCTIONS**

Machine Wash Cold With Like Colors. Do Not Bleach. Tumble Dry Low. Cool Iron, If Necessary.

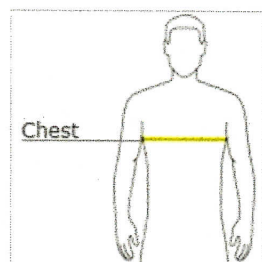


front



back

**HOW TO MEASURE**



**CHEST WIDTH**

Measure under the arm and around the fullest part of the chest with arms down, keeping tape horizontal.

**\$ 17.00**

**SIZE CHART**

	9XL	10XL	XS	S	M	L	XL	2XL	3XL	4XL	5XL	6XL	7XL	8XL
Chest	70-72	73-75	32-34	35-37	38-40	41-43	44-46	47-49	50-53	54-57	58-60	61-63	64-66	67-69

**COLOR INFORMATION**

Banana PMS 1345C	Black PMS NTR BLACK C	Bright Lavender PMS 2635C	Burgundy PMS 7428C	Charcoal Heather Grey PMS 7540C	Clover Green PMS 7763C	Coffee Bean PMS 476C	Cool Grey PMS 7539C	Court Green PMS 7724C	Dark Green PMS 5467C	Deep Berry PMS 7650C
Eggplant PMS 7448C	Gold PMS 143C	Hibiscus PMS 2348C	Kelly Green PMS 341C	Light Blue PMS 7451C	Light Pink PMS 196C	Lime PMS 2285C	Maroon PMS 504C	Maui Blue PMS 2200C	Mediterranean Blue PMS 2118C	Mint Green PMS 9543C
Navy PMS 533C	Orange PMS 172C	Purple PMS 7679C	Red PMS 187C	Royal PMS 3597C	Steel Grey PMS 7540C	Stone PMS 452 C	Strong Blue PMS 2133C	Sunflower Yellow PMS 109C	Teal Green PMS 7715C	Texas Orange PMS 7584C
Tropical Pink PMS 2452C	Turquoise PMS 3015C	Ultramarine Blue PMS 7455C	White							

Port Authority® Silk Touch™ Long Sleeve Polo.  
K500LS \$24.00



A favorite for years, our Silk Touch™ polo is soft, supple and easy to care for. The silky smooth pique knit resists wrinkles while the classic long sleeve style looks great on everyone.

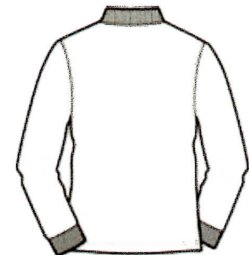
- 5-ounce, 65/35 poly/cotton pique
- Flat knit collar and cuffs
- Double-needle armhole seams and hem
- 3-button placket
- Metal buttons with dyed-to-match plastic rims
- Side vents

CARE INSTRUCTIONS

Machine Wash Cold With Like Colors. Do Not Bleach. Tumble Dry Low. Cool Iron, If Necessary.

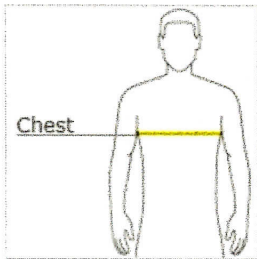


front



back

HOW TO MEASURE



CHEST WIDTH  
Measure under the arm and around the fullest part of the chest with arms down, keeping tape horizontal.

\$ 24.00

SIZE CHART

	XS	S	M	L	XL	2XL	3XL	4XL	5XL	6XL
Chest	32-34	35-37	38-40	41-43	44-46	47-49	50-53	54-57	58-60	61-63

COLOR INFORMATION

									
Black PMS NTR BLACK C	Burgundy PMS 7428C	Cool Grey PMS 7539C	Dark Green PMS 5467C	Navy PMS 533C	Red PMS 187C	Royal PMS 3597C	Stone PMS 452 C	White	

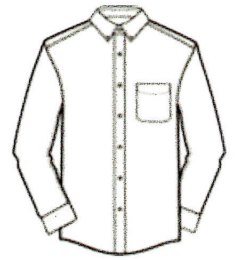


With sturdy construction, a generous cut and soft garment washing, our Value Denim Shirt won't stretch your budget.

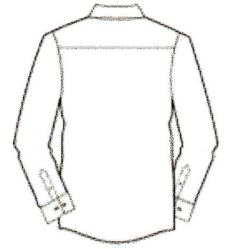
- 6.5-ounce, 100% cotton
- Double-needle stitching throughout
- Button-down collar
- Horn-tone buttons
- Left chest pocket
- Rounded adjustable cuffs
- Due to special finishing process, colors may vary.

**CARE INSTRUCTIONS**

Machine wash cold with like colors. Do not bleach. Tumble dry low. Warm iron if necessary.

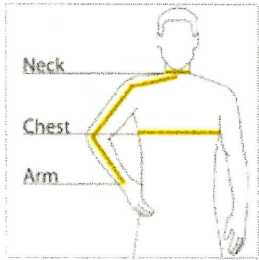


front



back

**HOW TO MEASURE**



**CHEST WIDTH**

Measure under the arm and around the fullest part of the chest with arms down, keeping tape horizontal.

**NECK**

Measure around the fullest part of the neck at the base.

**ARM**

Place hand on hip. Start at the center of the back of the neck and measure across the shoulder, to the elbow, and then down to the wrist.

**\$24.00**

**SIZE CHART**

	XL	2XL	3XL	4XL	5XL	6XL	XS	S	M	L
Chest	44-46	47-49	50-53	54-57	58-60	61-63	32-34	35-37	38-40	41-43
Neck	16 1/2 - 17	17 - 17 1/2	17 1/2 - 18	18 - 18 1/2	18 1/2 - 19	19 - 19 1/2	14 1/2 - 15	15 - 15 1/2	15 1/2 - 16	16 - 16 1/2
Arm	36 1/2	37 1/2	38 1/2	39 1/2	40 1/2	41 1/2	30 1/2	32	34	35

**COLOR INFORMATION**



Faded Blue\*



Ink Blue\*